

POWROLL TECH

⚠️ WARNING REQUIRED PROCEDURE

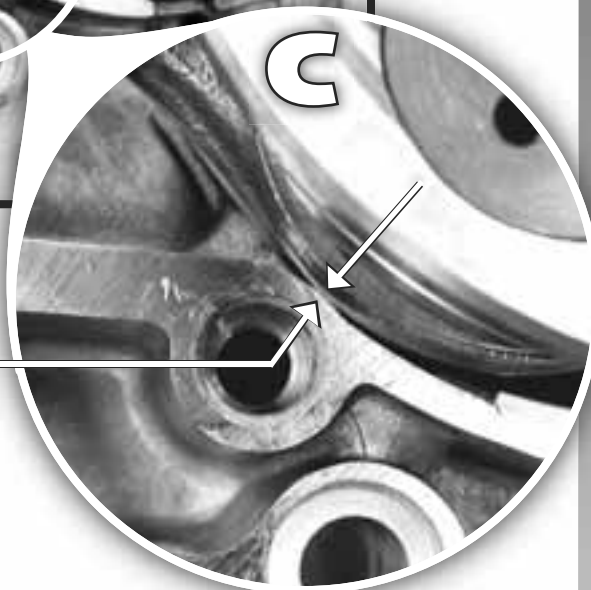
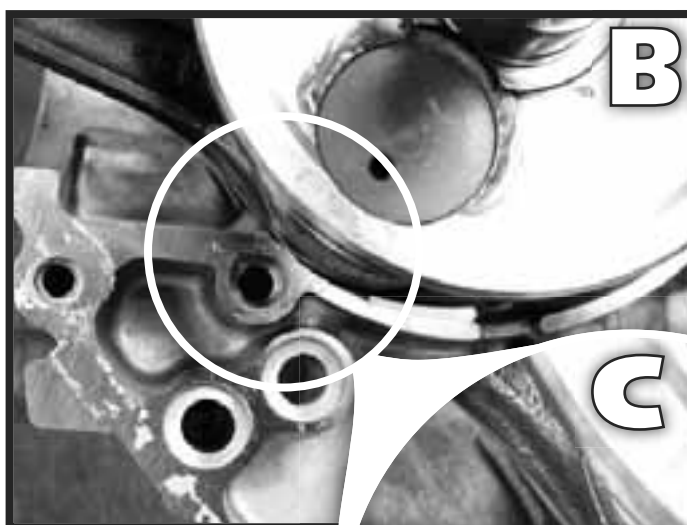
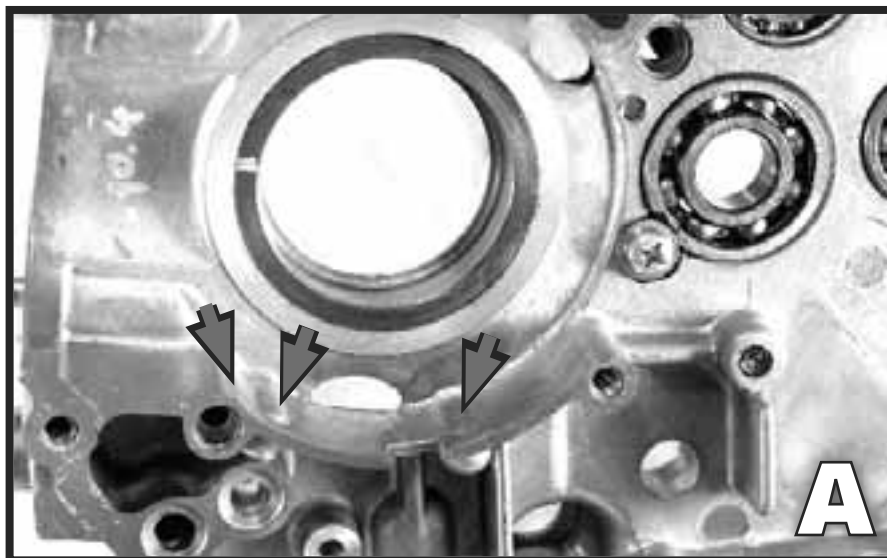
DRZ-KLX 110 STROKER CRANK INSTALLATION

Your Powroll stroked crank may require some minor clearancing of the cases. The right case has 3 areas which can interfere with the rod (see photo A).

STEP 1: Install your Powroll stroked crank in the right case with the rod parallel to the case studs. Slowly and gently rotate the crank, holding the rod in alignment with the studs.

STEP 2: If you feel any interference, allow the rod to gently contact the case (see photo B with detail image C), then remove the crank. Carefully remove just enough material to allow at least .020" clearance (detail image C). Re-install the crank and repeat STEP 2 until the crank rotates freely.

STEP 3: Follow the same procedure for the left case. This case should not require any modification, but needs to be checked. If there is interference, follow STEP 2 until the crank rotates freely.



.020" MINIMUM CLEARANCE

